



Wizcon Supervisor™

The complete Internet-based solution for control and information

Installing BACnet



ELUTIONS Inc.
1300 East 8th Avenue
Suite 200
Tampa, FL 33605
USA
tel +1 (813) 371-5500
fax +1 (813) 371-5501

Wizcon Systems SAS
Parc Technologique de Lyon
12 allée Irène Joliot-Curie
F-69791 Saint-Priest Cedex
France
tel +33 (0)4 72 47 98 98
fax +33 (0)4 72 47 98 99

Wizcon Systems BV
Concordiaweg 149-151
Postbus 351
NL-4200 AJ Gorinchem
Nederland
tel +31 (0)183 646 303
fax +31 (0)183 621 601

Wizcon Systems Ltd
The Gate Hotel, Scotland Gate
Northumberland
NE62 5SS
UK
tel +44 (0)845 606-6120
fax +44 (0)845 606-6121

www.wizcon.com
<http://support.wizcon.com>

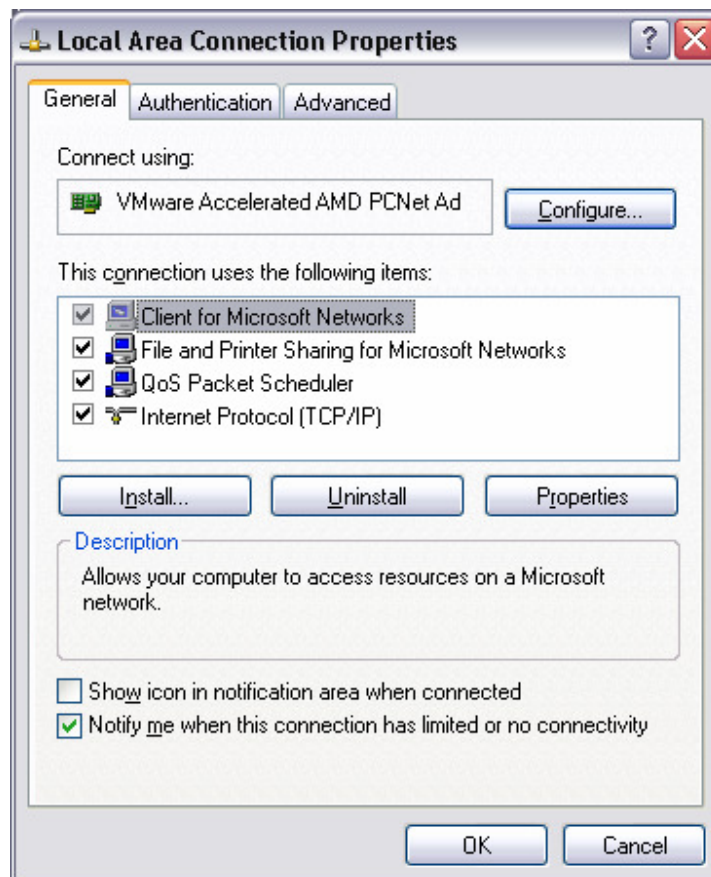
Overview

Wizcon 9.0 introduced a new version of the BACnet driver, VPIWNBCN. Before this driver can be used, a minimum amount of configuration of the PC is necessary. This document details the steps required in order to configure your network so that it is ready to be used.

Configuring the Network

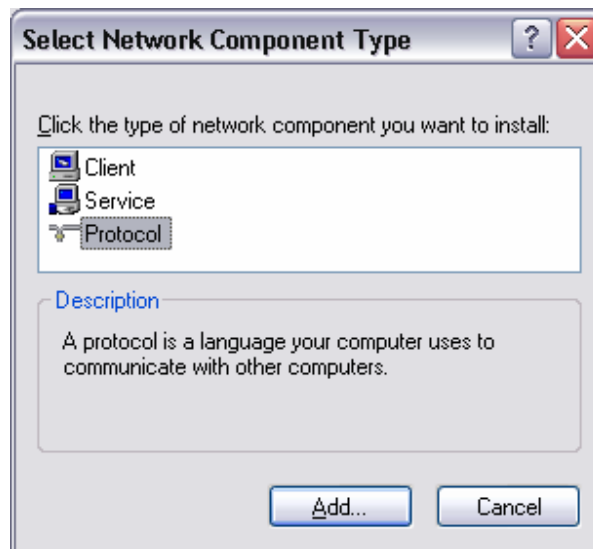
Step 1/7

Open the Windows Control Panel and choose the Network Properties option. This will open the following dialog box:



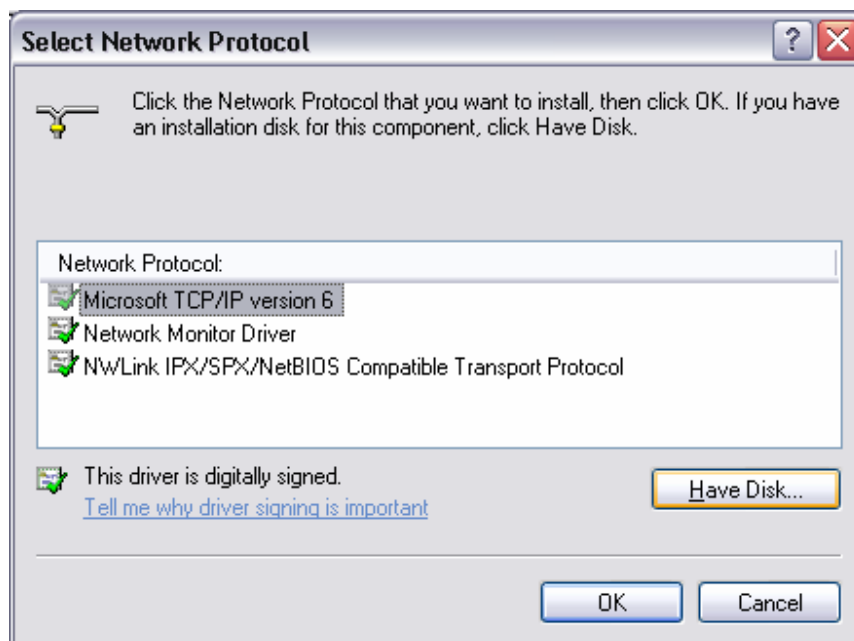
Step 2/7

Now click on the “install” button to install a new protocol.



Step 3/7

Now select the “Add” button, followed by the “Have Disk” button on the dialog box shown below.

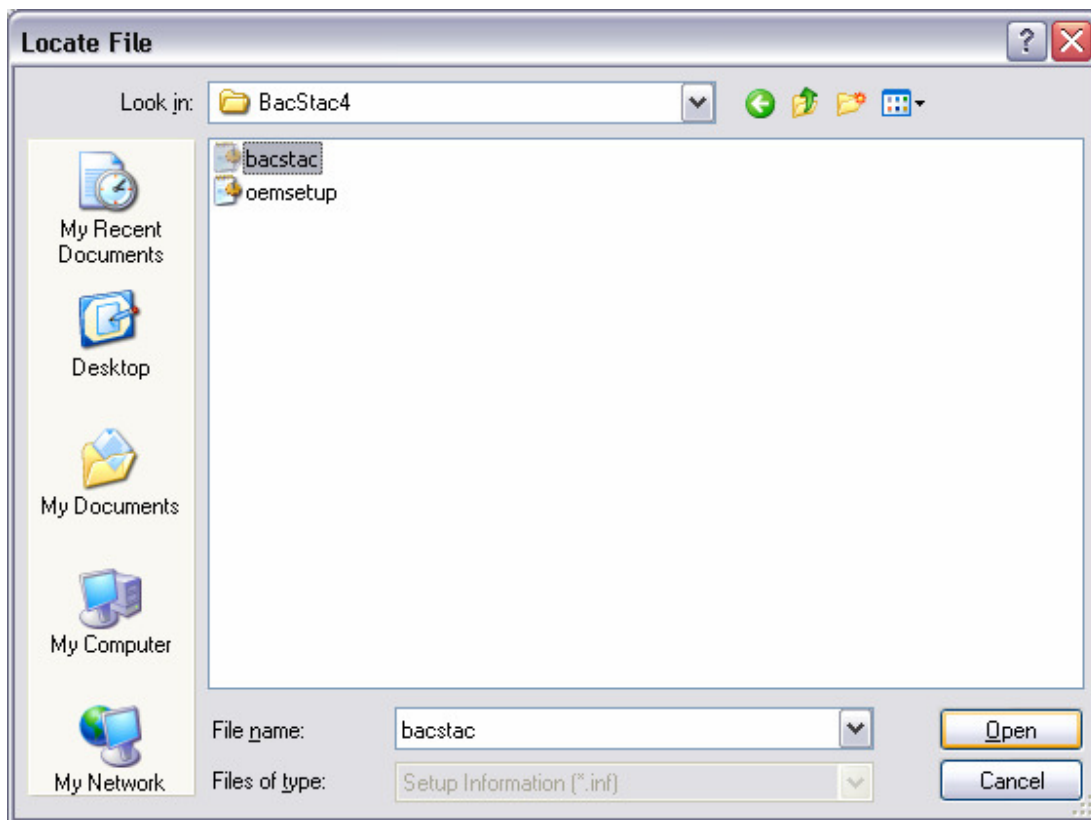


Step 4 / 7

This will allow you to select the location of the installer. The installer is provided for you in the following location:

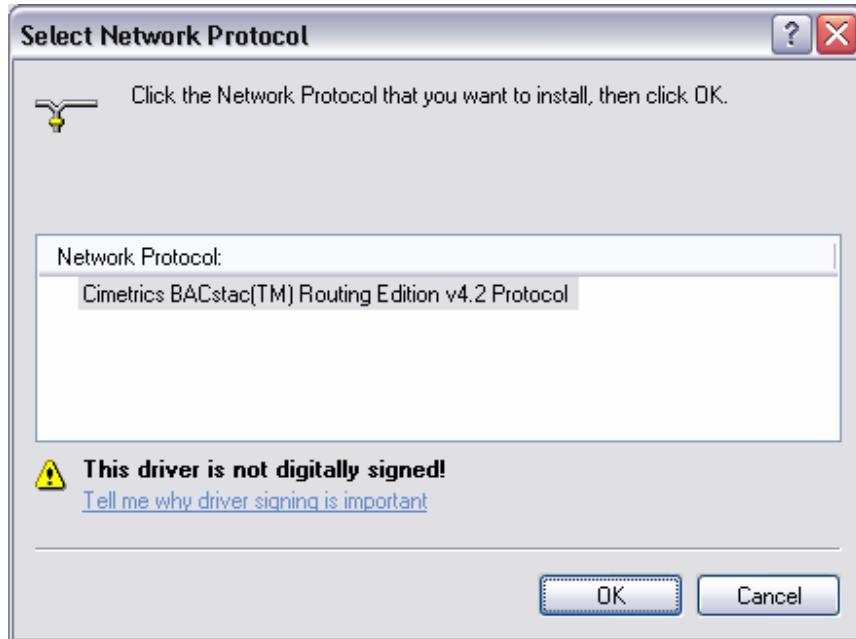
<<Install Folder>>\Wizcon Supervisor\Wizcon\Bin\Bacnet install\BacStac4

(Where <<Install Folder>> is the folder into which you installed Wizcon Supervisor™ (by default this is C:\Program Files).



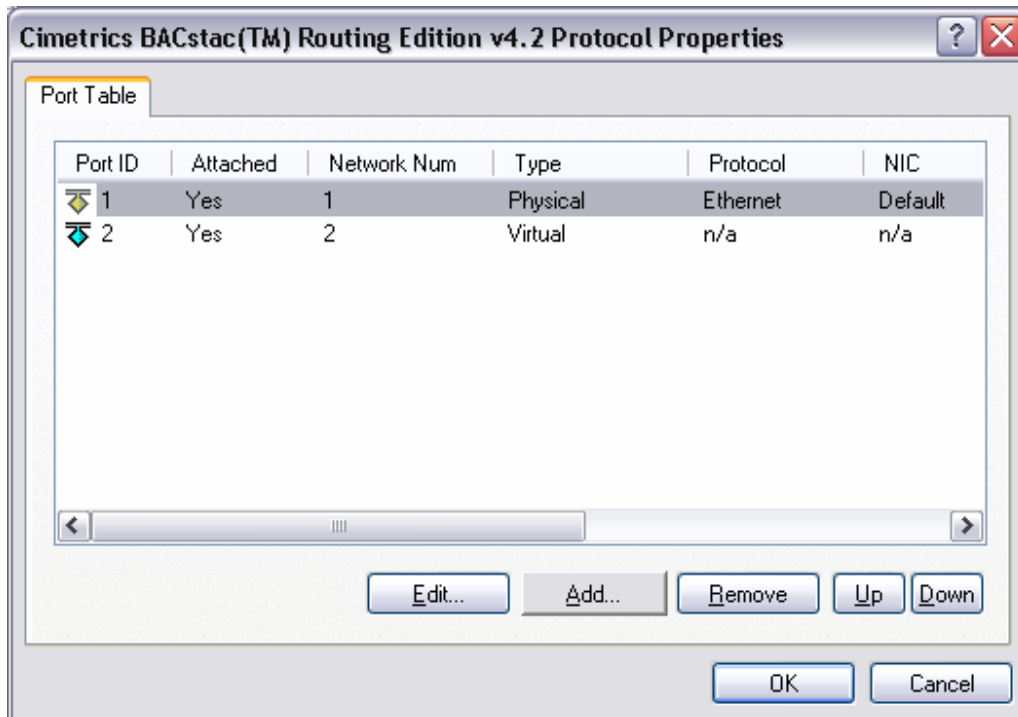
Step 5/7

The installation will now proceed. When it is finished, you will see the following dialog box:



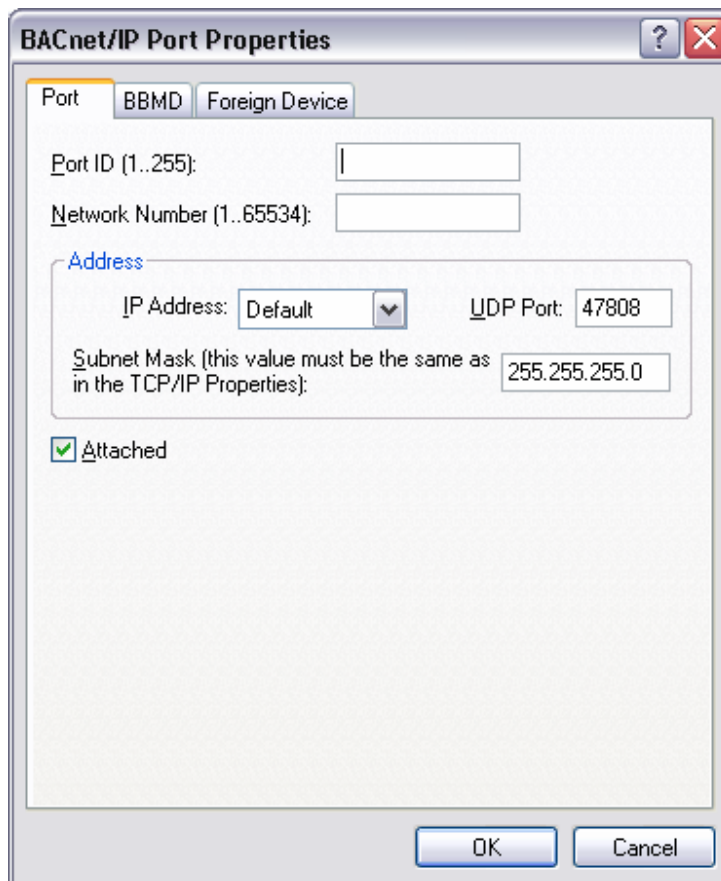
Step 6/7

You now have to configure the BACnet network protocol layer. You first have to remove the physical Ethernet #1 and then add the BACnet/IP protocol layer. Click on the “Remove” button shown below.



Step 7/7

Finally, you need to choose the port ID and network number. Generally, you can choose a value of 1 for each.



The image shows a Windows-style dialog box titled "BACnet/IP Port Properties". It has three tabs: "Port" (selected), "BBMD", and "Foreign Device". The "Port" tab contains the following fields and controls:

- "Port ID (1..255):" followed by an empty text input box.
- "Network Number (1..65534):" followed by an empty text input box.
- A section titled "Address" containing:
 - "IP Address:" followed by a dropdown menu set to "Default".
 - "UDP Port:" followed by a text input box containing "47808".
 - "Subnet Mask (this value must be the same as in the TCP/IP Properties):" followed by a text input box containing "255.255.255.0".
- A checked checkbox labeled "Attached".

At the bottom of the dialog are "OK" and "Cancel" buttons.

Your network is now configured to connect to BACnet devices!